

MICROSOFT LIFECAM STUDIO HD

DESCRIPTION

This high quality webcam has a glass lens and a 1080p HD sensor. It records at 30 frames per second and its features include autofocus, digital zoom, manual and automatic exposure plus technology to help keep your video bright and colourful in virtually all light conditions. Unlike other webcams it provides MJPEG encoded video which can be recorded by Dartfish Software.



PROS

- 👉 Good video quality (up to 1080p)
- 👉 USB 2.0 connection so no need for an additional power cable or hardware
- 👉 Attaches to any tripod
- 👉 Use 2 Microsoft HD webcams in order to benefit from dual camera input in InTheAction

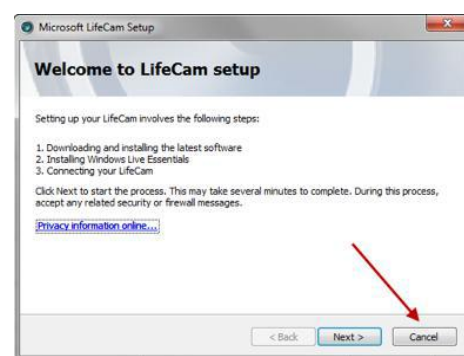
CONS

- 👉 Lacks the features of a camcorder e.g. limited digital zoom only
- 👉 30 frames per second rather than 50 or 60

INSTALLATION

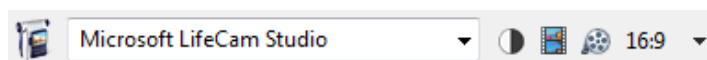
Simply connect your webcam to a USB port and Windows will automatically install the necessary driver.

IMPORTANT Do not insert any discs or install any Microsoft software that ship with the camera. If the “Welcome to LifeCam setup” window (see opposite) appears when the device is connected, prevent LifeCam software installation by clicking ‘Cancel’.



Optimal camera settings

When the camera is selected, various settings buttons appear:



Click the **configure format** button to configure these recommended video settings:

Frame Rate: 30.000

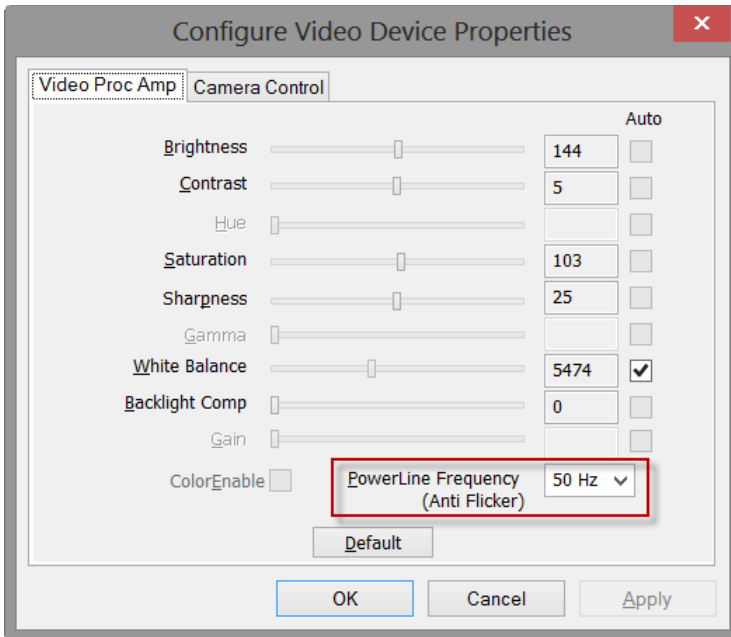
Color Space / Compression: MJPG

Output Size: 1280 x 720

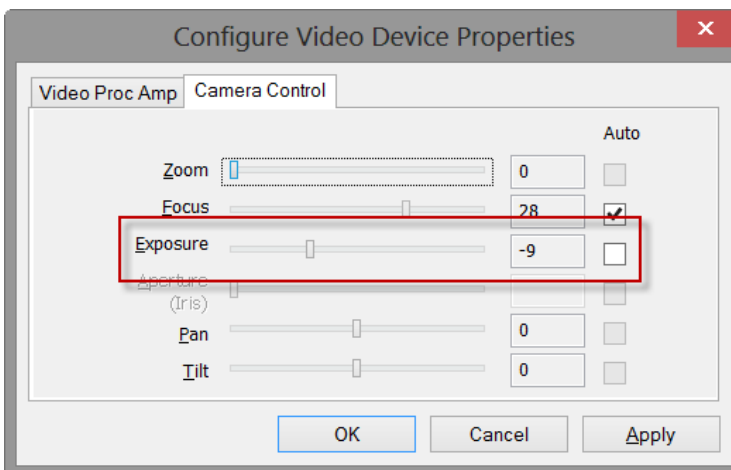
USEFUL TIPS

- 👉 If recording from two webcams, connect each to a different USB port on your computer – do not use a USB hub
- 👉 If using USB extension cables we recommend top quality **ACTIVE** extension cables (e.g. www.lindy.com); these feature built-in electronics which regenerate the USB signal.

CLICK THE CONFIGURE DEVICE BUTTON TO CONFIGURE THE BEST IMAGE FOR VIDEO ANALYSIS



To prevent flicker under artificial light, set the **Powerline frequency** to the AC frequency of the power supply for your country (e.g. US = 60 Hz, EU = 50Hz)



Set **Exposure** to reduce motion blur.

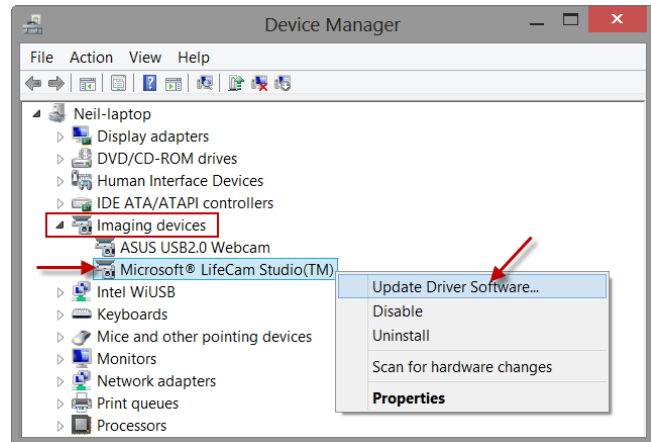
Zoom and focus can also be configured here

TROUBLESHOOTING

If you are unable to select MJPG when configuring the device please follow these instructions:

- 01 Close Dartfish software
- 02 Launch Windows Device manager:
 WINDOWS 7: **Windows Start > Control Panel > Hardware and Sound > Devices and Printers > Device Manager**
 WINDOWS 8: search **settings** for **Device Manager**

- 03 Select **Imaging Devices** > right click Microsoft LifeCam Studio then select **Update Driver Software**.



- 04 Click **browse my computer for driver software**

How do you want to search for driver software?

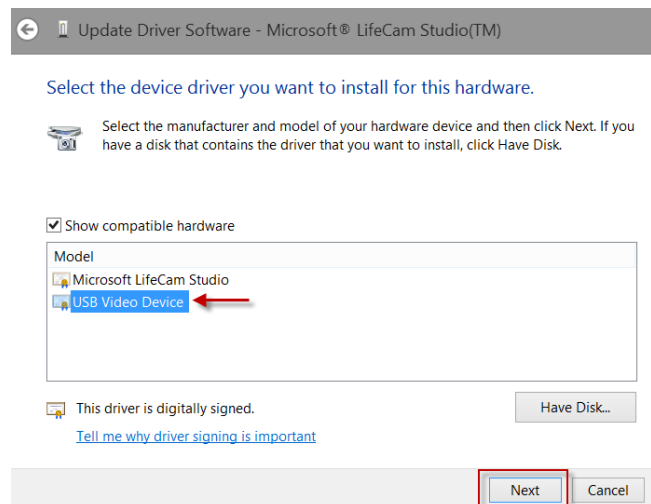
- Search automatically for updated driver software
Windows will search your computer and the Internet for the latest driver software for your device, unless you've disabled this feature in your device installation settings.

- Browse my computer for driver software
[Locate and install driver software manually.](#)

- 05 Then select **Let me pick from a list of device drivers on my computer**

- Let me pick from a list of device drivers on my computer
This list will show installed driver software compatible with the device and all driver software in the same category as the device.

- 06 Select **USB Video Device** then click NEXT



EXAMPLE OF USE CASES

These are an inexpensive and easy solution for static use like bike fitting or gait analysis.